



Wind turbine and solar photovoltaic  
system design and installation

# Contents..

- 2: Let's Go... An introduction to feed-in renewable solutions
- 3: It's Payback Time... Financial benefits of a feed-in system
- 4: feed-in Wind Turbines
- 5: feed-in Solar Photovoltaic Systems
- 6: Information for Domestic Customers
- 7: Information for Commercial Customers/Developers & Architects
- 8: Contact us

# Let's Go..

## We can help reduce your carbon footprint..

At feed-in we believe renewable energy is a viable alternative to the conventional power supply. We hope our services can help to reduce global CO2 emissions and save our customers money.

We have experience managing, designing and installing many renewable energy systems, specifically photovoltaic and wind turbines. We have a background in the construction industry varying from ground works to roofing. We can guide your project from conception to completion.

The level of carbon dioxide in the atmosphere is continually rising - the UK has pledged to reduce 60% of emissions by 2050. In order to achieve this goal on-site renewable generation will have to play a large role. By installing a wind turbine or solar PV system you can drastically reduce your carbon footprint or even become carbon neutral.

We have experience working in conjunction with architects, developers, home owners, businesses and the public sector. We have a varied selection of products geared towards wind and solar PV generation.

## We specialise in:

- Wind turbine system design and installation
- Solar PV system design and installation

# It's Payback Time..

## Wish the power company would pay you?

Electricity prices are higher than ever and are set to increase even further. A wind turbine or solar system helps you to secure against future price rises and could earn you money from your power company. All the energy produced by a wind turbine or solar system can be sold to your energy supplier.

Did you know that when you are using electricity produced by a solar PV system or wind turbine you are automatically not buying energy from the grid, saving you money?

A feed-in Grid Connect system supplies energy to your property which is then distributed throughout the building to power various electrical appliances. As there is no facility to store this energy, any surplus generated will be fed beyond your property and back into the local grid. This energy is then consumed by the nearest electrical load, usually your neighbours.

All the energy that your installed system produces is recorded by an energy export meter. This is so that your energy company can calculate how much power you have produced and how much you have purchased from them. Depending on the tariff that is most suitable to you, your energy company will either pay you for everything that you produce or pay you a higher rate for everything that you export. The energy exported from your property is sold per kWh in the same way as the energy bought from your current supplier (as shown on your electricity bill).



## feeling the pinch?

# feed-in Wind Turbines..

feed-in are official dealers of Eoltec wind turbines..

## Our systems can:

- Cut down your carbon footprint
- Reduce your electricity bills by up to 100%
- Produce renewable energy 24/7
- Boost awareness and green credentials

The Eoltec wind turbine produces enough energy for three UK homes.\*

\*dependant on wind speed.



The UK has 40% of Europe's total wind energy resource making it a fantastic location for a wind turbine.

Feed-in exclusively supply Eoltec wind turbines. The Eoltec Scirocco 6kW wind turbine has proven itself to be the best and most powerful in its class. At a modest wind speed of 5m/s the Eoltec wind turbine will produce approximately 10,000kWh per year. This is enough energy to run 3 average UK homes. (An average UK home will consume 3,300kWh – information courtesy of the Energy Savings Trust)

The Eoltec wind turbine has been designed without compromise and uses state of the art technology to optimise performance. This increases production by up to 150% compared to its competitors!

To ensure the highest quality the Eoltec Scirocco wind turbine has undergone extensive testing, simulation and analysis. Design and calculations have been made according with IEC 61400-2 design rules.

This wind turbine is an ideal choice for home owners, businesses and public sector organisations.

Find out if your site is suitable and read more about the Eoltec wind turbine at:

[www.feed-in.co.uk](http://www.feed-in.co.uk)



# feed-in Solar PV..

## Connect up to free, secure energy..

A solar PV module converts the energy in sunlight into an electric current which can be used to power any building. Similar to wind turbines solar systems feed generated power directly into your property.

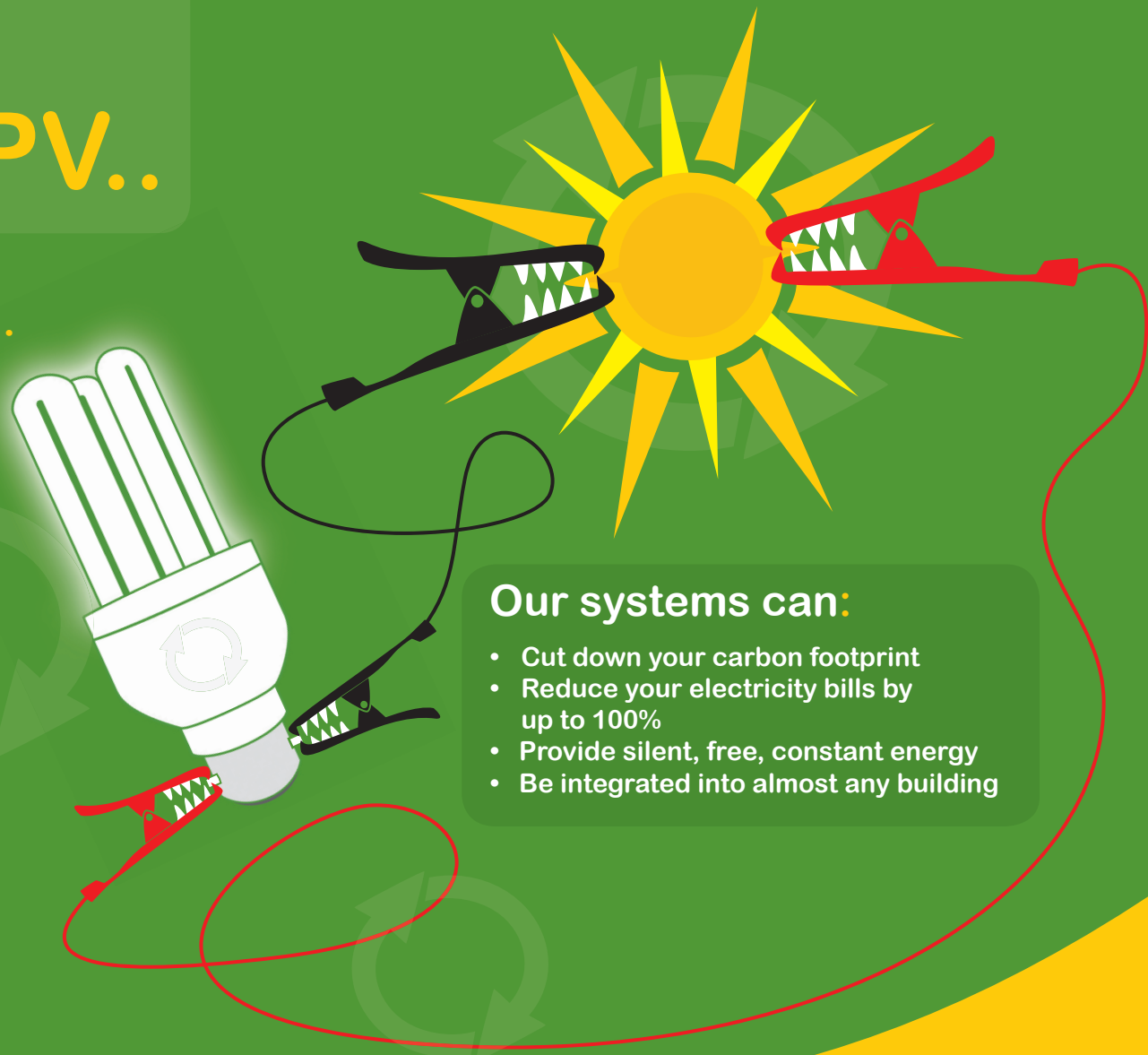
At feed-in we use Sharp solar photovoltaic modules within our solar PV systems wherever possible. Sharp are the world's leading manufacturers of solar modules. Sharp solar modules are manufactured in Wrexham which means they have a lower carbon footprint compared to other brands.

Feed-in Solar PV systems normally consist of multiple PV modules installed together in series. PV systems can be many shapes and sizes dependant on the site and power requirements.

A standard 4kW PV system would produce approximately 3200kWh per year. This amount of power would be adequate for one average UK home.

Read more and find out if your site is suitable at:

[www.feed-in.co.uk](http://www.feed-in.co.uk)



## Our systems can:

- Cut down your carbon footprint
- Reduce your electricity bills by up to 100%
- Provide silent, free, constant energy
- Be integrated into almost any building

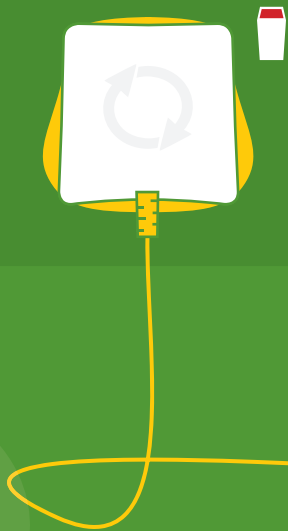
# feed-in Domestic..



## Harness free renewable energy for your own home..

Feed-in solar PV and wind turbine systems can be easily integrated into your existing building. There is no need to change anything! This said we recommend becoming as energy efficient as possible. If you are generating your own energy it makes sense not to waste it!

Feed-in systems help you to reduce your energy bills and cut down your carbon footprint.



For the first time in many years house prices have started to fall, it is believed that the installation of sustainable technologies i.e. solar PV panels or wind turbines could help prevent this fall or even increase the value of homes. This is due to the considerably reduced running costs making homes with onsite renewable generation very attractive to buyers. This is particularly true as the turbulent energy market means more and more people are “feeling the pinch”.

Find out if your site is suitable at:  
[www.feed-in.co.uk](http://www.feed-in.co.uk)

# feed-in Commercial..

Invest in the future and profit from renewable energy..

## Systems for businesses:

Feed-in staff have experience of working together with businesses, developers and architects to deliver turnkey professional renewable systems on deadline.

Our renewable systems help businesses to cut down carbon emissions, reduce dependence on fossil fuels and secure against energy price rises. More and more business are realising the importance of

investing in green energy and the significance of generating energy for use within the business.

Feed-in can help your business to save money by employing renewable energy systems which can drastically cut down your electricity bills. Installing renewable energy can also be a great way to boost your business's profile.

## Useful information for developers:

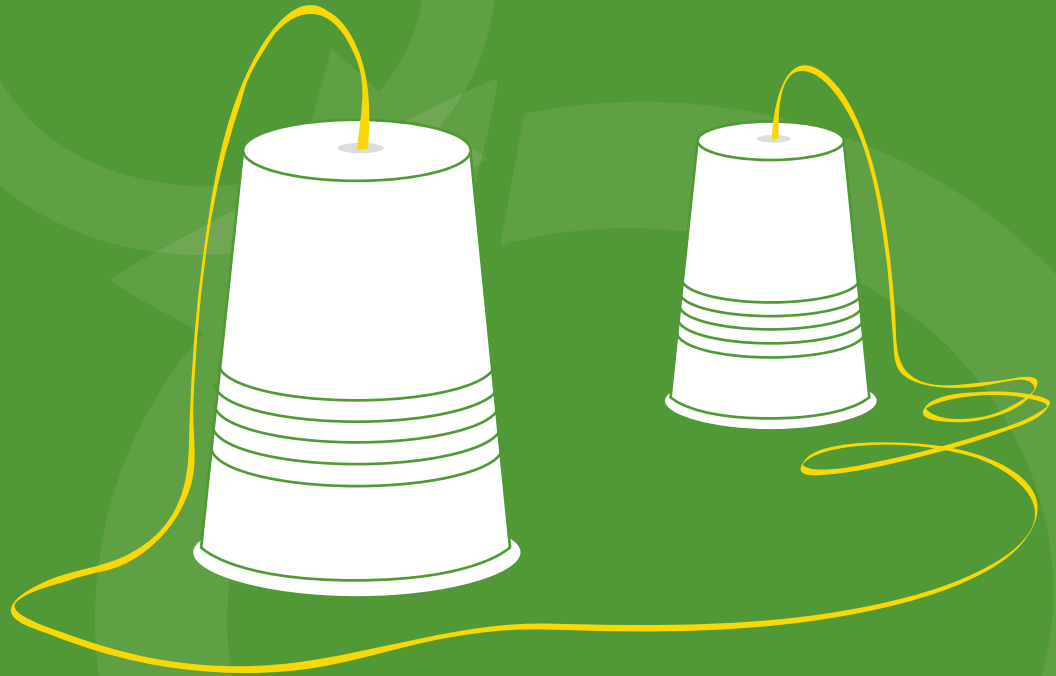
Onsite renewable generation can be used to produce more affordable and more sustainable homes and buildings. The running costs of a building with onsite generation will be considerably lower than a standard home built to current regulations.

With energy prices continuing to rise the ability to "future proof" a home against further

increases is becoming more and more attractive to home owners and buyers. Electricity prices have risen as much as 30% in a year and are continuing to rise. The use of onsite renewable generation can enable home builders to stand out from their competitors.

Find more at:  
[www.feed-in.co.uk](http://www.feed-in.co.uk)

# Contact us..



Feed-In Renewable Solutions  
Parrs Farm, Denton Road  
Earsham, Bungay  
Suffolk, NR35 2AR  
tel: 01508 483 980  
info@feed-in.co.uk

[www.feed-in.co.uk](http://www.feed-in.co.uk)